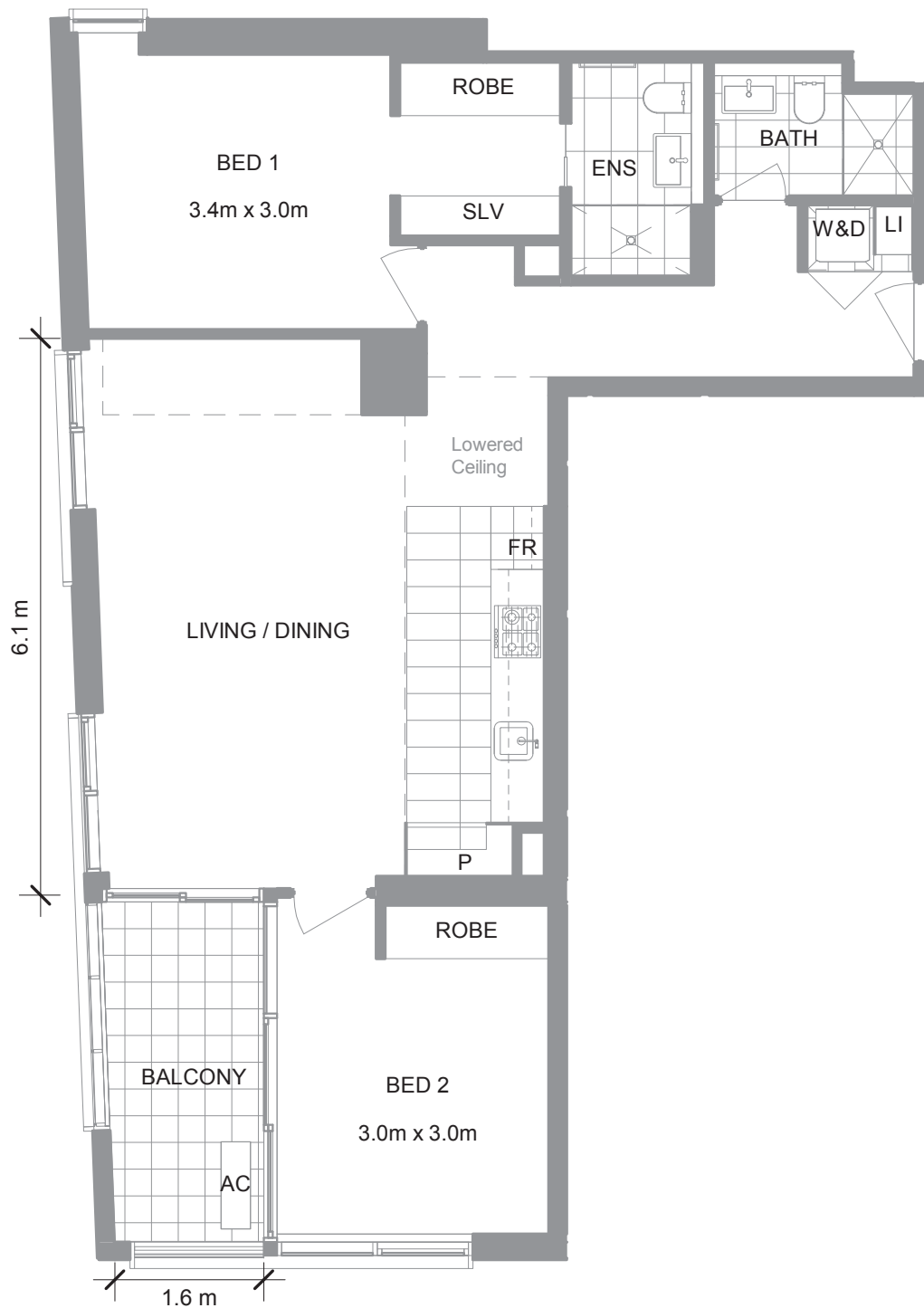


# Parkhill

MELBOURNE APARTMENTS



**TYPE**  
**S**

**2 BED**  
**2 BATH**

**Unit No. 209**

**Total titled area (Approx): 90m<sup>2</sup> / 969ft<sup>2</sup>**



Please note: This document is for marketing and information purposes, its content is intended for illustrative purposes only and is subject to change without notice. Furniture and display items depicted are not included. The final product – including views, colours and the plan - will vary from images shown. The vendor and its agents make no representation or warranty about the accuracy of any detail in this material and accept no liability for any error or change. This material does not form part of any contract for sale and should not be relied upon. Lowered ceilings to specified areas. All dimensions are approximate. Area shown is the estimated total titled area rounded to nearest whole number as calculated by the vendor's surveyor in accordance with the plan of subdivision. Not all lots of the same type will be the same size or price. © Central Equity Limited 10/2023\_V1.