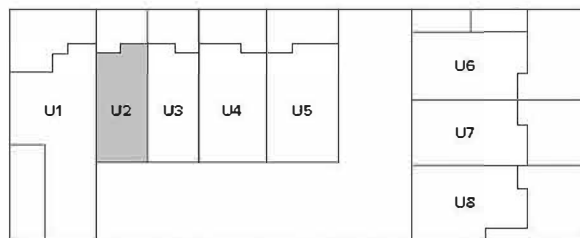


NOBLE PARK VIC 3174

UNIT 2

2	2	3	1

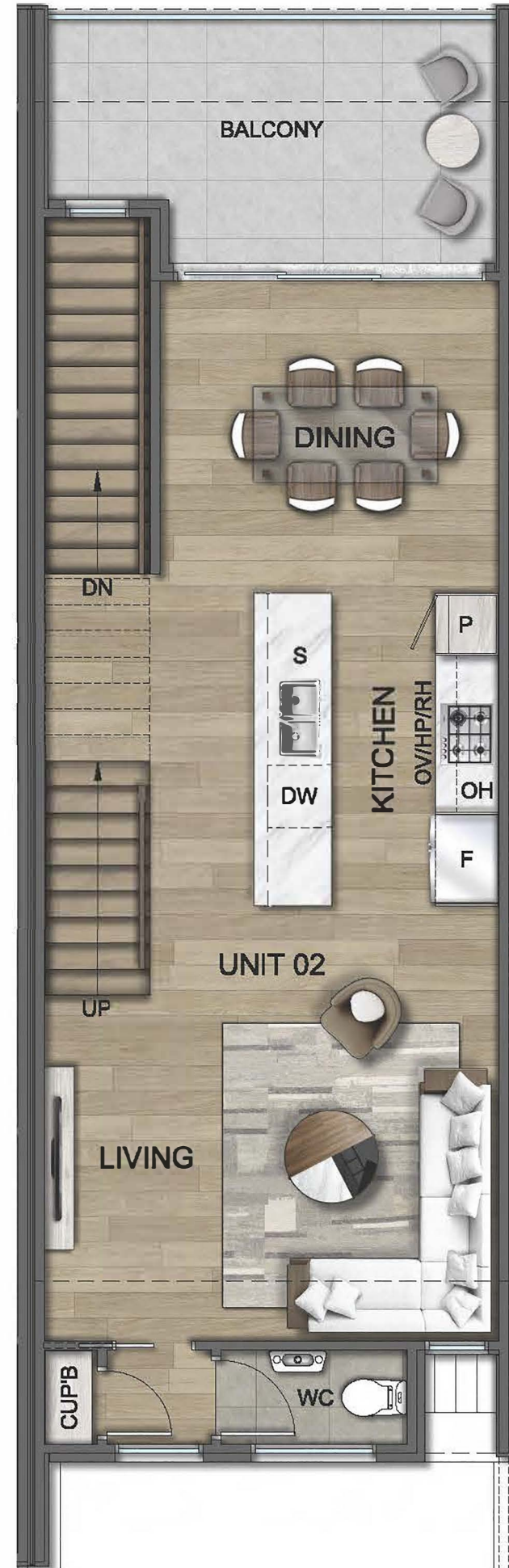
GROUND FLOOR	46 m ²
FIRST FLOOR	53 m ²
SECOND FLOOR	54 m ²
TOTAL FLOOR AREA	16.5 SQ / 153 m²
S.P.O.S	10 m ²
TOTAL P.O.S	25 m ²
LAND SIZE	83.77 m ²
TOTAL AREA	19.16 SQ / 178 m²



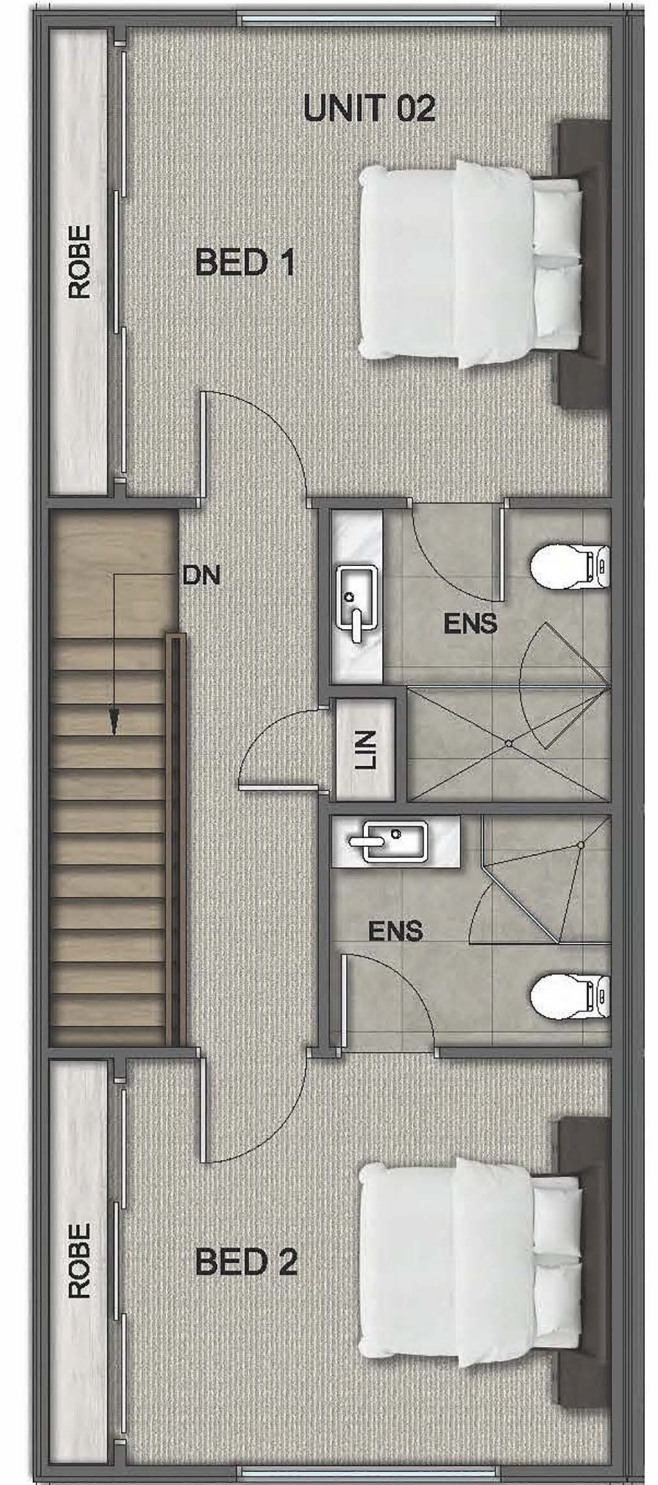
DISCLAIMER: This document has been produced by the developer for advertising and general information only. The developer and its project team do not guarantee, warranty or represent that the information contained within this document is correct. Any interested parties should undertake their own enquiries as to the accuracy of this document. The developer excludes unequivocally all inferred or implied terms, conditions and warranties arising out of this document and excludes all liability for loss and are subject to change without notice and should be verified by the purchaser on or prior to exchange. The information contained herein is believed to be current but is not guaranteed. Furniture is not included.



GROUND FLOOR



FIRST FLOOR



SECOND FLOOR