

Doncaster

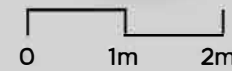
DONCASTER



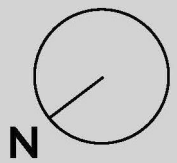
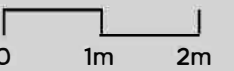
GROUND FLOOR



FIRST FLOOR



SECOND FLOOR

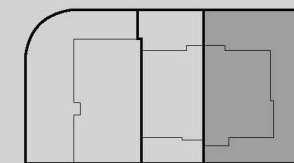


GROUND FLOOR 105.2m<sup>2</sup>  
 FIRST FLOOR 95.6m<sup>2</sup>  
 SECOND FLOOR 76.6m<sup>2</sup>

TOTAL FLOOR AREA 277.4m<sup>2</sup>/29.9 sq

COURTYARD 28.3m<sup>2</sup>  
 LAND SIZE 240.2m<sup>2</sup>

TOTAL AREA 412.4m<sup>2</sup>/44.4 sq



Unit 3

Disclaimer: This work is exclusively owned by Melbourne Architect Constructions and cannot be reproduced or copied either wholly or in part in any form of mediam without the written permission of Melbourne Architectural Constructions. Dimensions may vary slightly as per the facade selected. Floorplan based on the Angeles facade. Minimum Lot Sizes may vary due to Council requirements & Estate Guidelines. This document is for illustration purposes and should be used as a guide only, illustrations are not to scale. All room dimensions provided are internal measurements only and to framework. Refer to actual working drawings. Furniture not included.