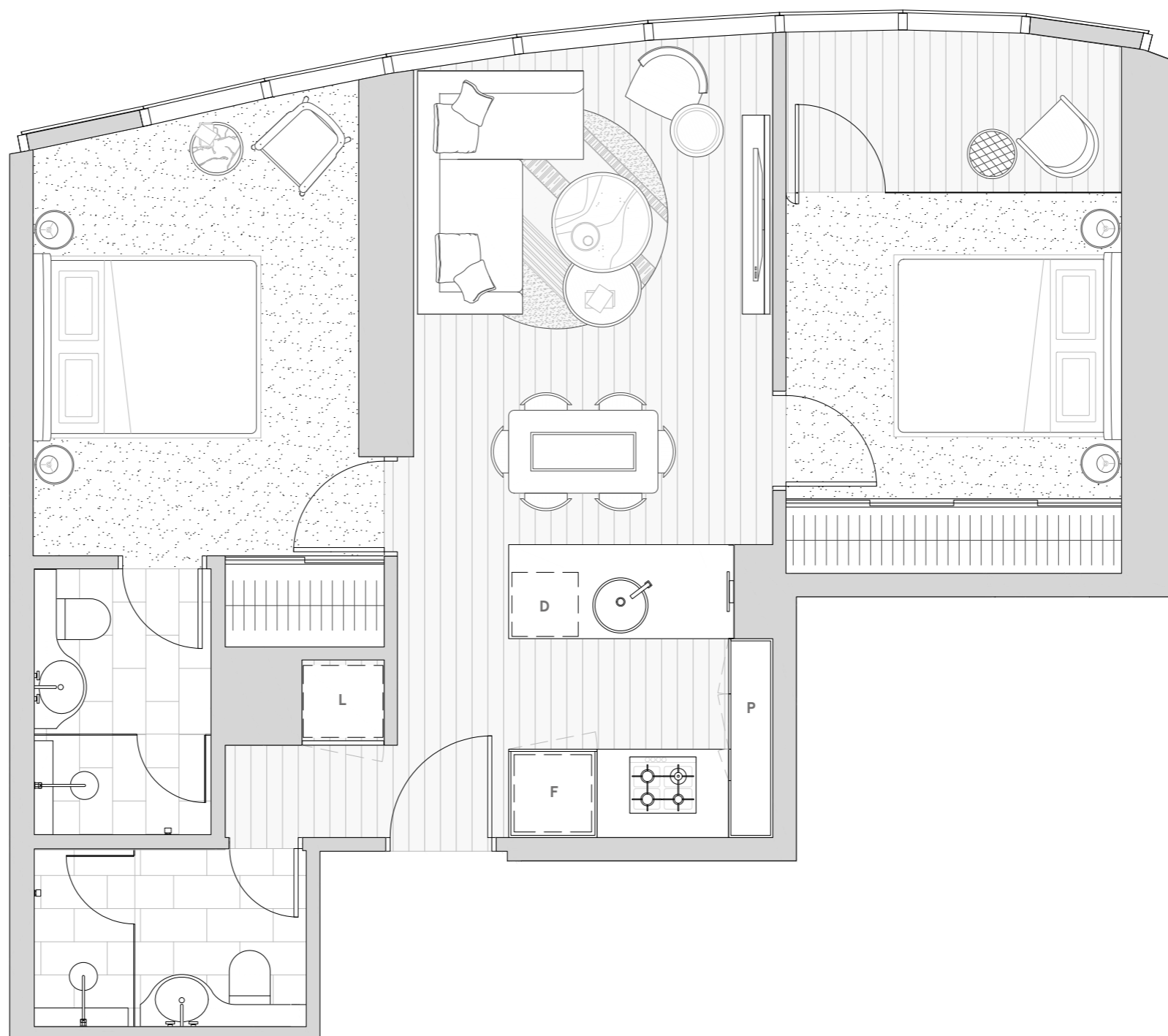
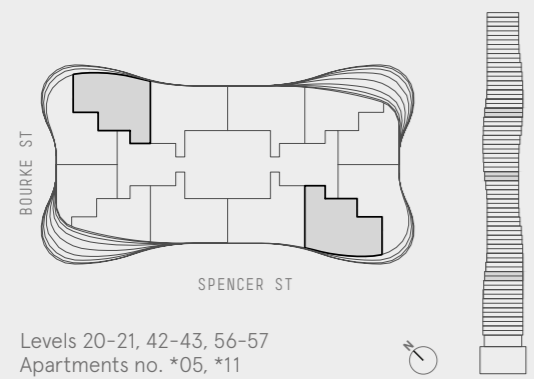
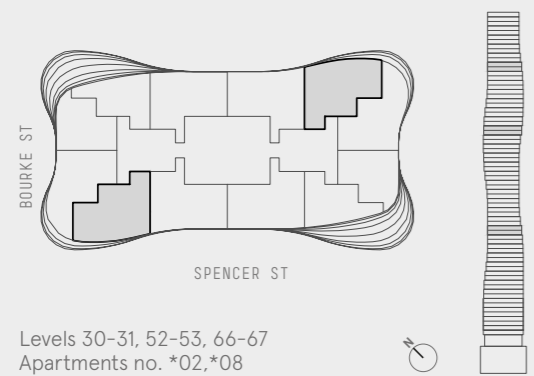


## APARTMENT TYPE C3.0

■ 2 BEDROOM, 2 BATHROOM

INTERNAL AREA	65.6m <sup>2</sup>
WINTERGARDEN	5.3m <sup>2</sup>
TOTAL AREA	70.9m <sup>2</sup>

TOTAL NO. 24



These floor plans were prepared before the completion of the design, engineering and construction elements of the project. The floor plans are intended only as a guide and an aid to further investigations by potential purchasers and are subject to change in relation to areas and dimensions, floor layout, design, engineering, fittings and specifications. The areas and dimensions set out in the floor plans are calculated using the Property Council Method of Measurement for Residential Property current at the date of preparation of the floor plans. Prospective purchasers should make their own enquiries and obtain their own independent legal advice in relation to the contract of sale.

L Laundry | F Fridge | P Pantry | D Dish Drawer