

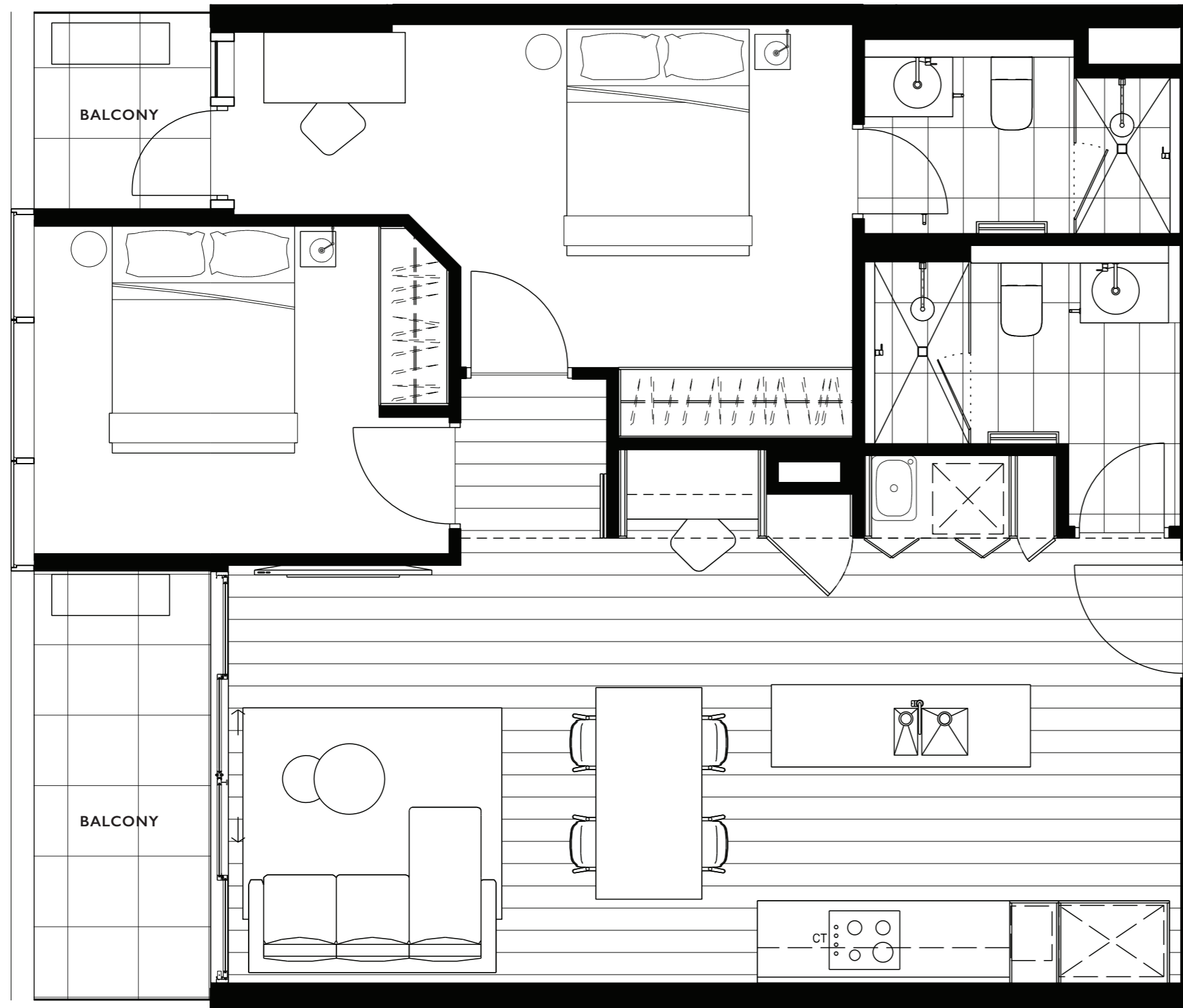
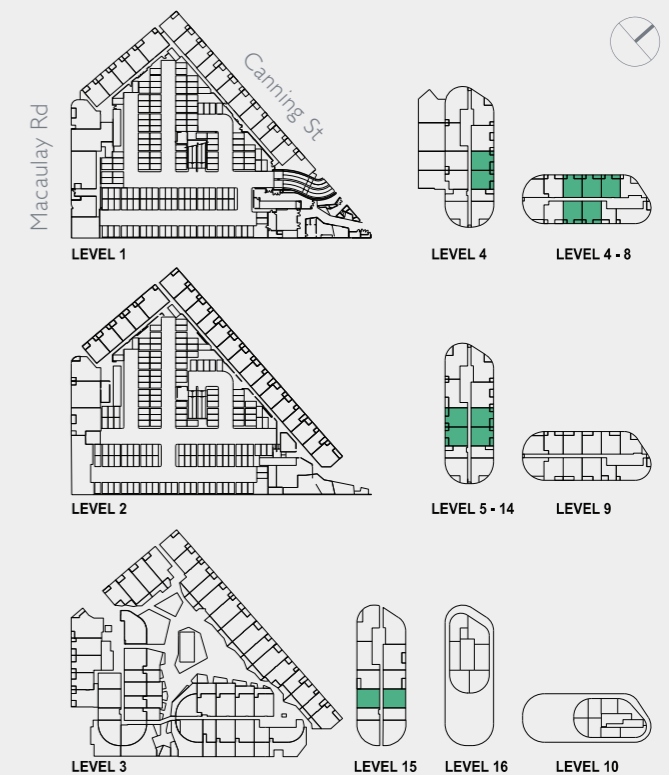
Apartment Type 17

SPECIFICATIONS



AREA

LOT	INT (m ²)	EXT (m ²)	TOTAL (m ²)
M503, M603, M703, M803, M903, M1003, M1103, M1203, M1303, M1403, M1503, M504, M604, M704, M804, M904, M1004, M1104, M1204, M1304, M1404	75.5	9.0	84.5
M409, M509, M609, M709, M809, M909, M1009, M1109, M1209, M1309, M1409, M410, M510, M610, M710, M810, M810, M910, M1010, M1110, M1210, M1310, M1410	74.5	9.0	83.5
M1510	74.1	8.8	82.9
C409, C509, C609, C709, C809, C410, C510, C610, C710, C810, C411, C511, C611, C711, C811	74.9	9.0	83.9
C403, C503, C603, C703, C803	75.0	9.0	84.0
C404, C504, C604, C704, C804	75.0	9.0	84.0



DISCLAIMER: These plans are intended as a guide only. The dimensions and areas are approximate only and may not accurately represent the actual dimensions and areas of the residences/car spaces or the spaces within them and are subject to change without notice. In addition, locations of utilities may vary during construction and fittings and fixtures on these plans are for illustrative purposes only. The areas are generally measured in accordance with the Property Council of Australia method of measurement. Prospective purchasers must rely on their own enquiries and should refer to the Contract of Sale and its schedules for all matters to be included in the purchase price of the residences, including plans, finishes, fixtures, fittings, appliances and other particulars of sale. Loose furniture and planters are not included. Extent of floor finishes may vary. External space and landscaping indicative only. Refer to contract elevations and plans for further clarification.



Arden Gardens

NORTH MELBOURNE