

STATURE

SOUTHBANK



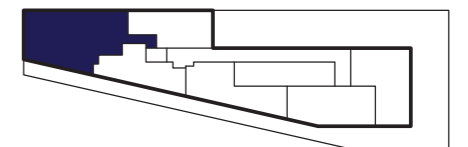
LEVEL 13 - 19 | APARTMENT 05 | TYPE R



AREA 90.9 SQM
BALCONY 3.8 SQM

AREA 978.4 FT²
BALCONY 40.9 FT²

- | | | | | | |
|-----------|---------------|---------------|--------------|---------------|-------------|
| 1/ Entry | 3/ Kitchen | 5/ Bathroom 2 | 7/ Living | 9/ Bedroom 2 | 11/ Pantry |
| 2/ Dining | 4/ Bathroom 1 | 6/ Laundry | 8/ Bedroom 1 | 10/ Bedroom 3 | 12/ Balcony |



It is the consumer's or purchaser's responsibility to independently confirm the accuracy and completeness of the information provided and to enter into and negotiate contracts of sale for the purchase of an apartment which will be the legally binding document between the parties. Dimensions, areas, fittings, specifications, tiling, paving and floor finishes, landscape and paved areas are indicative and subject to change without notice. Furniture and Whitegoods are also indicative only and not included in the prices disclosed unless specifically indicated elsewhere in the Contract of Sale. Any floor areas estimated are based on the Property Council of Australia method of measurement for residential property guidelines and indicative only and should not be relied upon as the actual size or floor area of any apartment purchased. Internal measurements are taken from centerline of party walls, external face of corridors and the external face of the outside walls. Purchasers should check the plans, specifications and goods included in the terms of the contract of sale carefully prior to signing any contract of sale.